



MONTHLY MEMBERSHIP PROGRESS REPORT

District 323E2

Results as of: 3/31/2017

GMT: KAMLESH JAIN

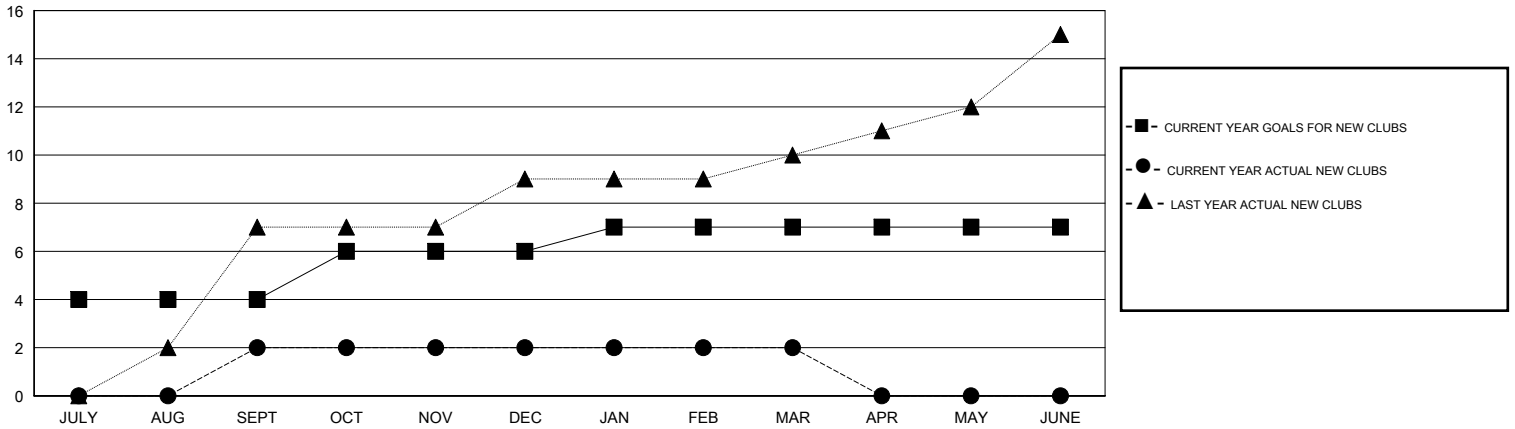
LOCATION INDIA

GMT CA

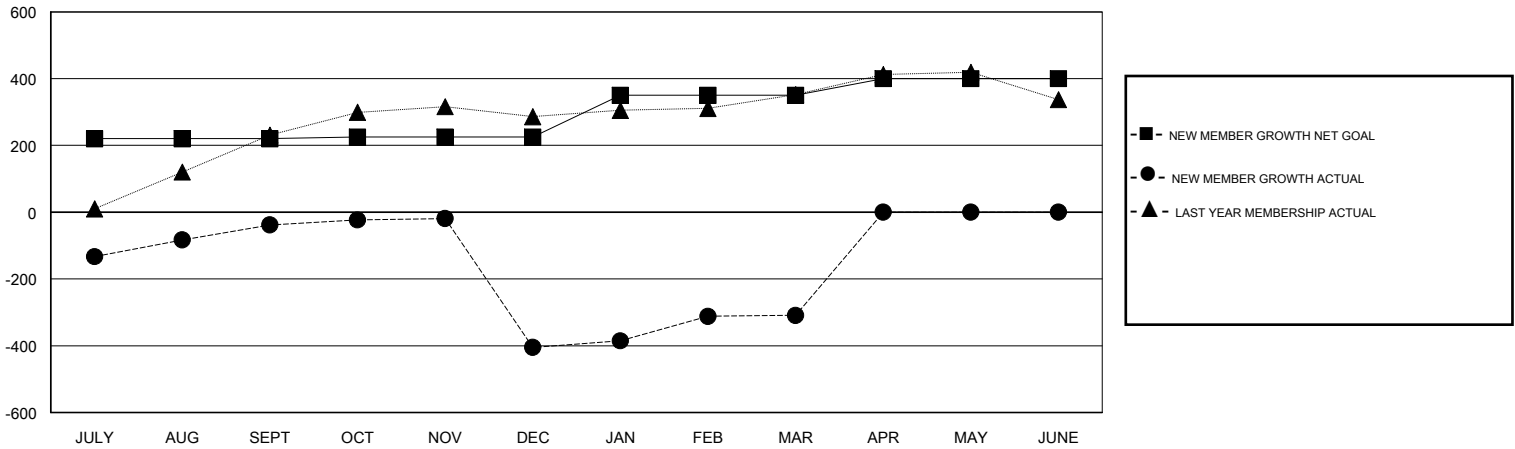
Clubs			
RESULTS FOR 2016-2017			
QUARTER	NEW CLUB GOAL	NEW CLUBS	DROPPED CLUBS
JULY/AUG/SEPT	4	2	0
OCT/NOV/DEC	2	0	15
JAN/FEB/MAR	1	0	1
APR/MAY/JUNE	0	0	0

Members			
RESULTS FOR 2016-2017			
QUARTER	NEW MEMBER GROWTH NET GOAL (not reinstated or transfers)	NEW MEMBER GROWTH ACTUAL (not reinstated or transfers)	DROPPED MEMBERS ACTUAL (including transfers)
JULY/AUG/SEPT	220	266	304
OCT/NOV/DEC	5	69	436
JAN/FEB/MAR	125	223	127
APR/MAY/JUNE	50	0	0

GOALS AND ACTUAL NEW CLUBS CUMULATIVE



GOALS AND ACTUAL MEMBERS CUMULATIVE



DROPPED CLUBS: 16	87 CLUBS OF 147 ADDED 1 OR MORE NEW MEMBERS	GENDER DISTRIBUTION
		MALE 4,615 (82.60%)
		FEMALE 972 (17.40%)
DROPPED MEMBERS	CLICK HERE FOR CUMULATIVE MEMBERSHIP DATA	TOTAL FAMILY UNIT MEMBERS 1,463
DECEASED 10		FAMILY MEMBERS PAYING HALF DUES 774
CLUB CANCELLED 347		
OTHER 510		
TOTAL 867		